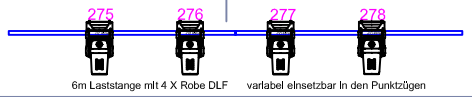


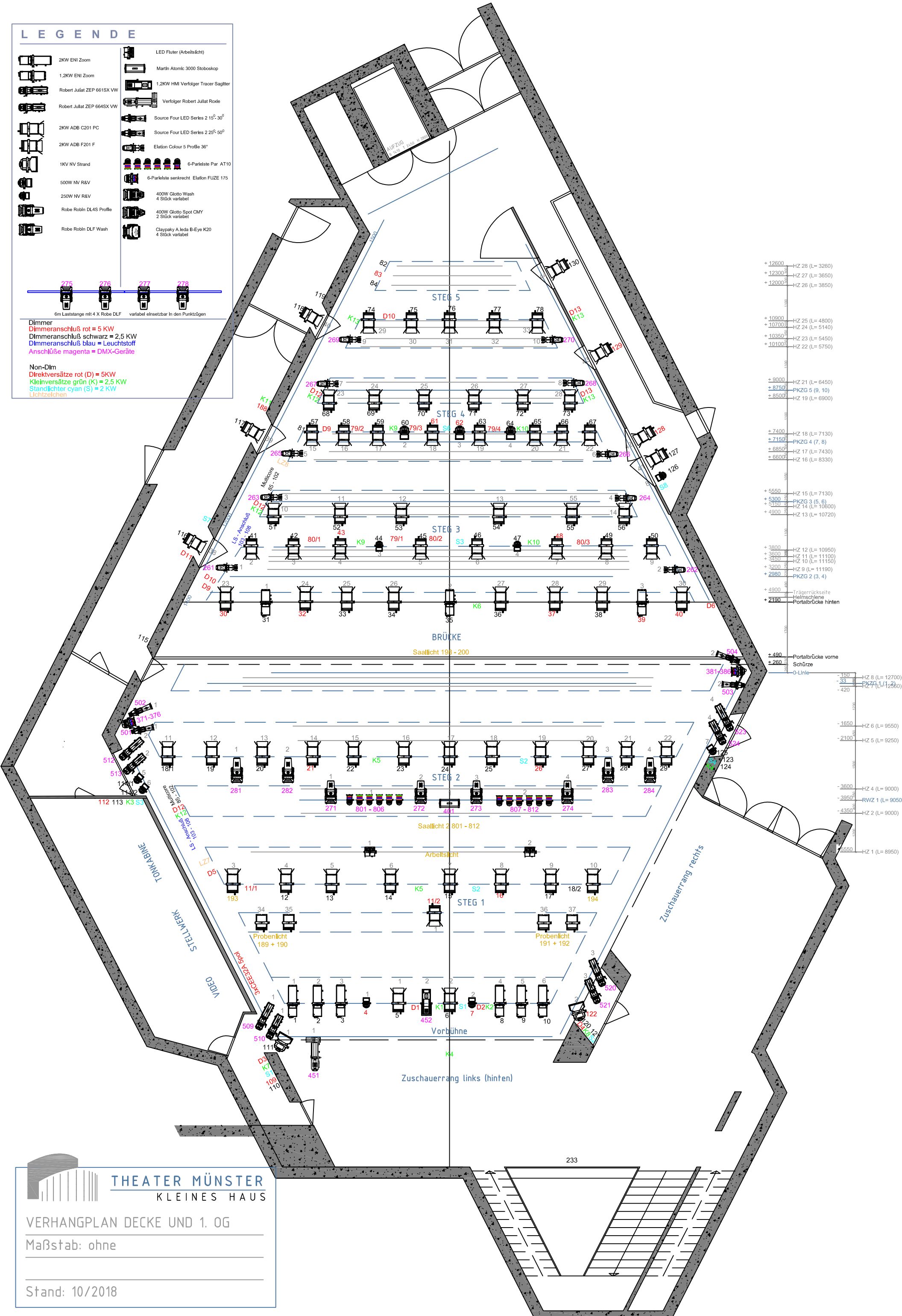
LEGENDE

- | | | | |
|--|----------------------------|--|--|
| | 2KW ENI Zoom | | LED Fluter (Arbeitslicht) |
| | 1,2KW ENI Zoom | | Martin Atomic 3000 Stoboskop |
| | Robert Juliat ZEP 661SX VW | | 1,2KW HMI Verfolger Tracer Sagittar |
| | Robert Juliat ZEP 664SX VW | | Verfolger Robert Juliat Roxle |
| | 2KW ADB C201 PC | | Source Four LED Series 2 15°-30° |
| | 2KW ADB F201 F | | Source Four LED Series 2 25°-50° |
| | 1KV NV Strand | | Elation Colour 5 Profile 36° |
| | 500W NV R&V | | 6-Paralele Par AT10 |
| | 250W NV R&V | | 6-Paralele senkrecht Elation FUZE 175 |
| | Robe Roblin DL4S Profile | | 400W Glotto Wash
4 Stück variabel |
| | Robe Roblin DLF Wash | | 400W Glotto Spot CMY
2 Stück variabel |
| | | | Claypakty A Ieda B-Eye K20
4 Stück variabel |



Dimmer
 Dimmeranschluß rot = 5 KW
 Dimmeranschluß schwarz = 2,5 KW
 Dimmeranschluß blau = Leuchtstoff
 Anschlüsse magenta = DMX-Geräte

Non-Dim
 Direktversätze rot (D) = 5KW
 Kleinversätze grün (K) = 2,5 KW
 Standlichter cyan (S) = 2 KW
 Lichtzeichen



- + 12600 HZ 28 (L= 3260)
- + 12300 HZ 27 (L= 3650)
- + 12000 HZ 26 (L= 3850)
- + 10900 HZ 25 (L= 4800)
- + 10700 HZ 24 (L= 5140)
- + 10350 HZ 23 (L= 5450)
- + 10100 HZ 22 (L= 5750)
- + 9000 HZ 21 (L= 6450)
- + 8750 PKZG 5 (9, 10)
- + 8500 HZ 19 (L= 6900)
- + 7400 HZ 18 (L= 7130)
- + 7150 PKZG 4 (7, 8)
- + 6850 HZ 17 (L= 7430)
- + 6600 HZ 16 (L= 8330)
- + 5550 HZ 15 (L= 7130)
- + 5300 PKZG 3 (5, 6)
- + 5100 HZ 14 (L= 10800)
- + 4900 HZ 13 (L= 10720)
- + 3800 HZ 12 (L= 10950)
- + 3600 HZ 11 (L= 11100)
- + 3450 HZ 10 (L= 11150)
- + 3200 HZ 9 (L= 11190)
- + 2980 PKZG 2 (3, 4)
- + 4900 Trägerrückseite
- + 2100 Helmschleife
- + 2100 Portalbrücke hinten
- + 480 Portalbrücke vorne
- + 260 Schürze
- 0-Linie
- 150 HZ 8 (L= 12700)
- 33 PKZG 1 (1, 2, 6)
- 420
- 1650 HZ 6 (L= 9550)
- 2100 HZ 5 (L= 9250)
- 3600 HZ 4 (L= 9000)
- 3950 RWZ 1 (L= 9050)
- 4350 HZ 2 (L= 9000)
- 5550 HZ 1 (L= 8950)

THEATER MÜNSTER
 KLEINES HAUS

VERHANGPLAN DECKE UND 1. OG

Maßstab: ohne

Stand: 10/2018